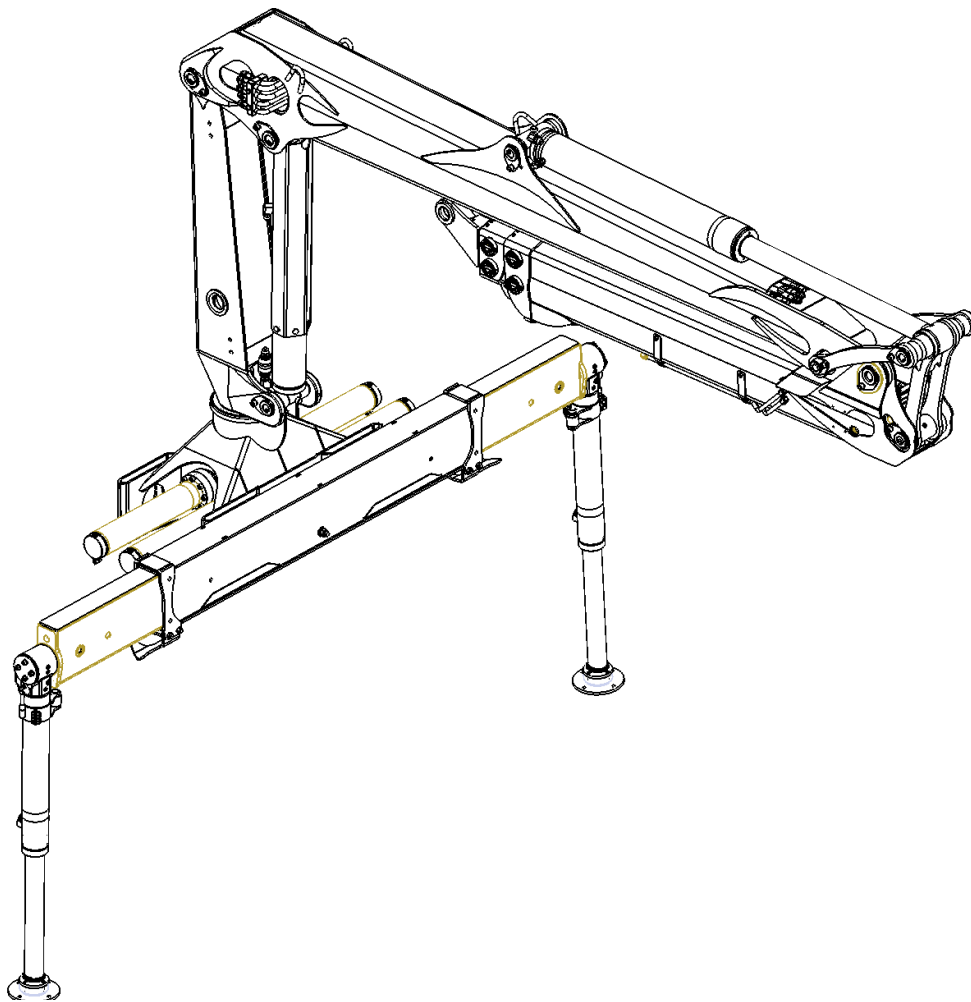




**2112-81**  
**2112-86**  
**2112T-97**  
**2112T-102**  
**2112T-115**

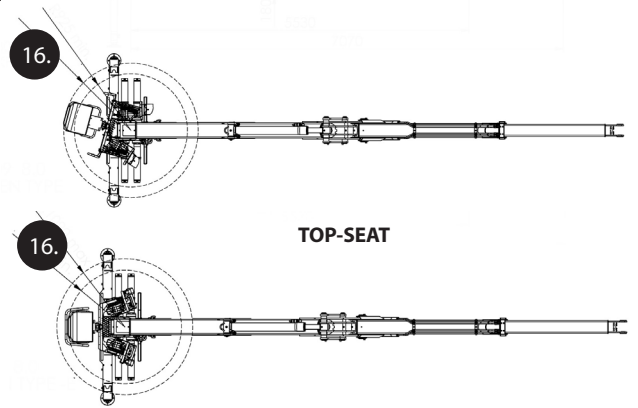
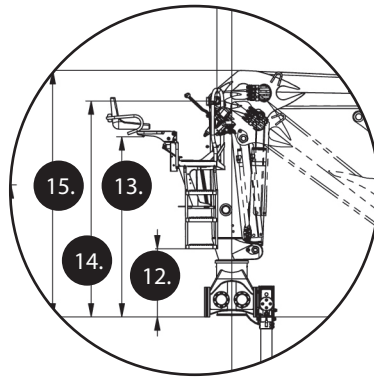
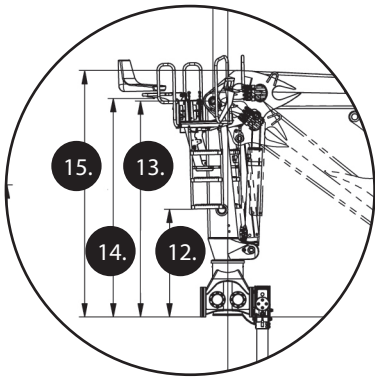
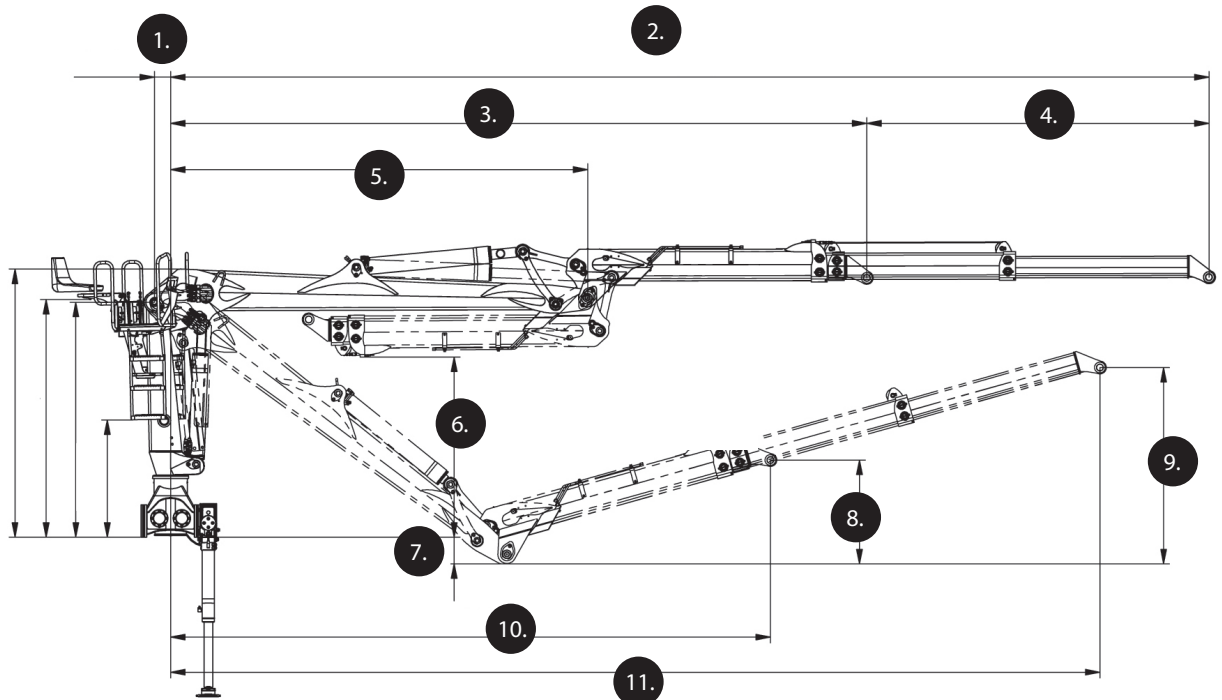
**5/2021**

---

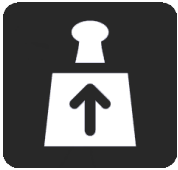


**TEKNISET TIEDOT**

**TECHNICAL DATA**



TOP-SEAT

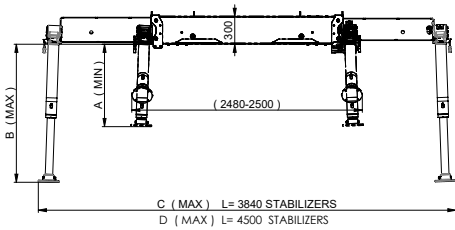
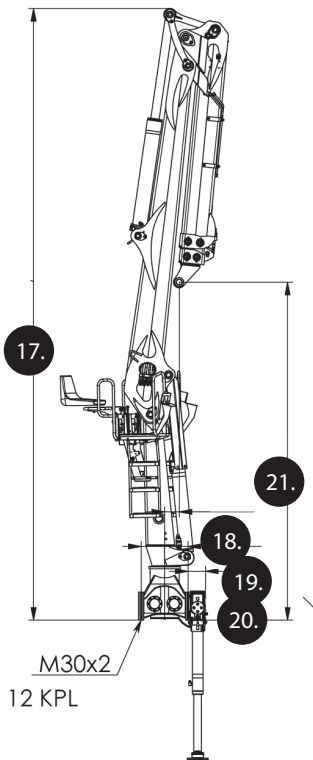


	3 m	4 m	5 m	6 m	7 m	8 m	9 m	10 m	11 m
2112-81	4 080	3 090	2 530	2 120	1 790	1 540	-	-	-
2112-86	3 910	2 960	2 430	2 030	1 720	1 480	-	-	-
2112T-97	3 900	3 000	2 400	2 020	1 720	1 490	1 320	-	-
2112T-102	3 850	2 950	2 370	1 970	1 650	1 430	1 260	1 120	-
2112T-115	3 550	2 640	2 100	1 760	1 500	1 280	1 130	1 010	910

	2112-81	2112-86	2112T-97	2112T-102	2112T-115
1.	150	150	150	150	150
2.	8 100	8 600	9 700	10 200	11 510
3.	6 500	7 000	6 510	7 010	7 510
4.	1 600	1 600	3 200	3 200	4 000
5.	3 900	4 400	3 900	4 400	4 400
6.	1 710	1 715	1 680	1 690	1 690
7.	250	545	250	545	545
8.	890	845	970	960	1 085
9.	1 390	1 365	1 840	1 800	2 140
10.	5 600	6 010	5 610	6 020	6 500
11.	7 140	7 555	8 690	9 100	10 360

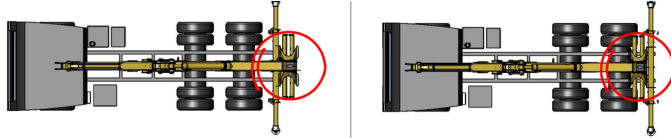
	TOP-SEAT	TOP-SEAT E
12.	1 100	690
13.	2 200	1 830
14.	2 220	2 200
15.	2 510	2 510
16.	940-1 120	980-1 155

	2112-81	2112-86	2112T-97	2112T-102	2112T-115
17.	6 540	7 035	6 540	7 035	7 035
18.	150	195	155	200	150
19.	500	500	500	500	500
20.	185	185	185	185	185

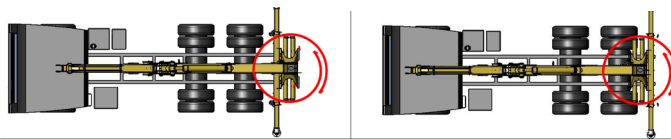


### SLEWING OPTIONS

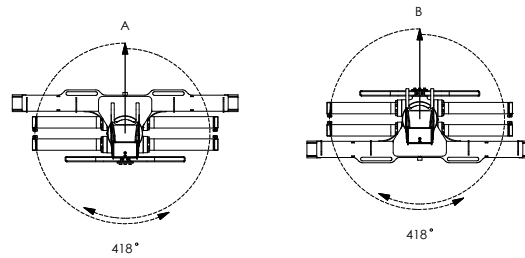
A1: working direction / pillar installation A2: working direction / pillar installation



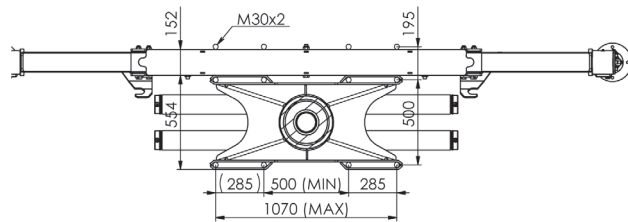
A3: working direction / pillar installation A4: working direction / pillar installation



### SLEWING OPTIONS (INTEGRATED STABILIZER)



### INSTALLATION



L (cyl.stroke)	500	600	700	800
A.	788	888	988	1 088
B.	1 287	1 487	1 687	1 887
C.	3 828	3 842	3 854	3 868
D.	4 482	4 496	4 510	4 524

### OUTREACH DIAGRAMS

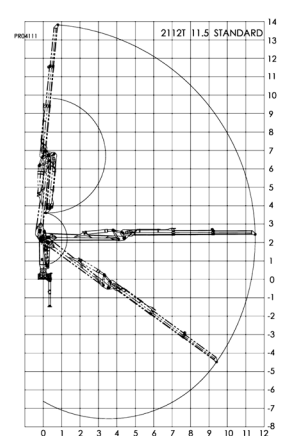
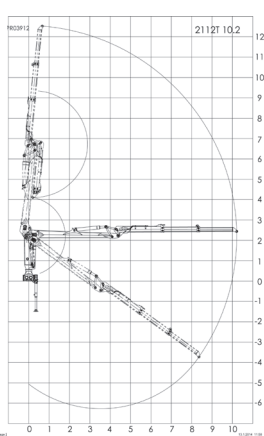
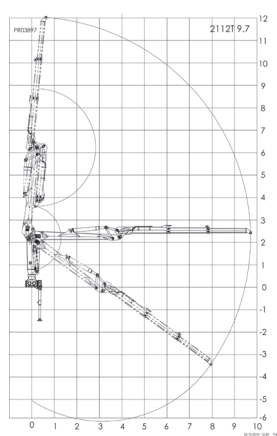
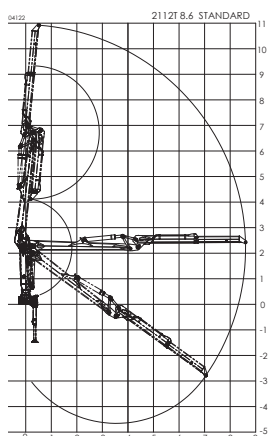
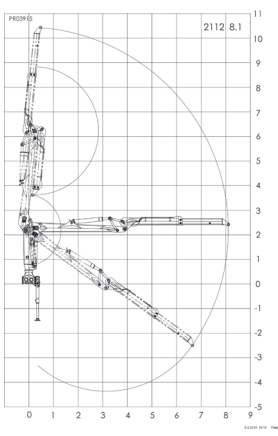
2112-81

2112-86

2112-97

2112-102

2112-115



		2112-81	2112-86	2112T-97	2112T-102	2112T-115
Nostomomentti (netto) • Lifting capacity (net)	(kNm)	128	124	122	116	110
Max. ulottuvuus • Max. outreach	(mm)	8 100	8 600	9 710	10 210	11 510
Jatkeen pituus • Hydraulic boom extension	(mm)	1 600	1 600	2 x 1 600	2 x 1 600	2 x 2 000
Kääntömomentti (integr./erilliset tukijat) • Slewing torque (integr. / separate stabilizers)	(kNm)	23/28	23/28	23/28	23/28	23/28
Kääntökulma • Slewing angle	(°)	418	418	418	418	418
Suosittelava hydr. tuotto • Recommended oil flow						
▶ 1-piiri • single circuit	(l/min)	70 - 100	70 - 100	70 - 100	70 - 100	70-100
▶ 2-piiri • double circuit	(l/min)	2 x 70 - 95	2 x 70 - 95	2 x 70 - 95	2 x 70 - 95	2 x 70 - 95
▶ LS	(l/min)	180 - 200	180 - 200	180 - 200	180 - 200	180 - 200
Työpaine • Operating pressure	(MPa)	26	26	26	26	26
Paino sis. nosturin avohallintalaitteella ilman kahmaria, kääntäjää ja öljyjä. Weight including the crane with top-seat, without the grapple, rotator and oil.	(kg)	1 910	1 940	2 010	2 050	2 110
	Weight of the crane with integrated stabilizers: 2112-81: 2 190 kg 2112-86: 2 220 kg 2112T-97: 2 290 kg 2112T-102: 2 330 kg 2112T-115: 2 390 kg					
Erillisen tukijalkapalkiston paino • Weight of the separate stabilizers (L=3840)	(kg)	385	385	385	385	385

Classification according: EN12999:2011 HC1/HD4/B4

Valmistajan antamat arvot ovat ohjeellisia. Kesla pidättää oikeuden muutoksiin.  
The values provided by the manufacturer are indicative. Kesla reserves the right to make changes.



Kesla Oyj  
Kuumankatu 24  
FI-80100 JOENSUU. FINLAND  
Tel. +358 207 862 841  
Fax +358 13 610 0521  
www.kesla.com

