



2212S-81
2212S-86
2212ST-97
2212ST-102

6/2024

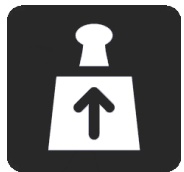
CRANE CODE 9000487



TEKNISET TIEDOT

TECHNICAL DATA

NOSTOARVOT · LIFTING CAPACITY

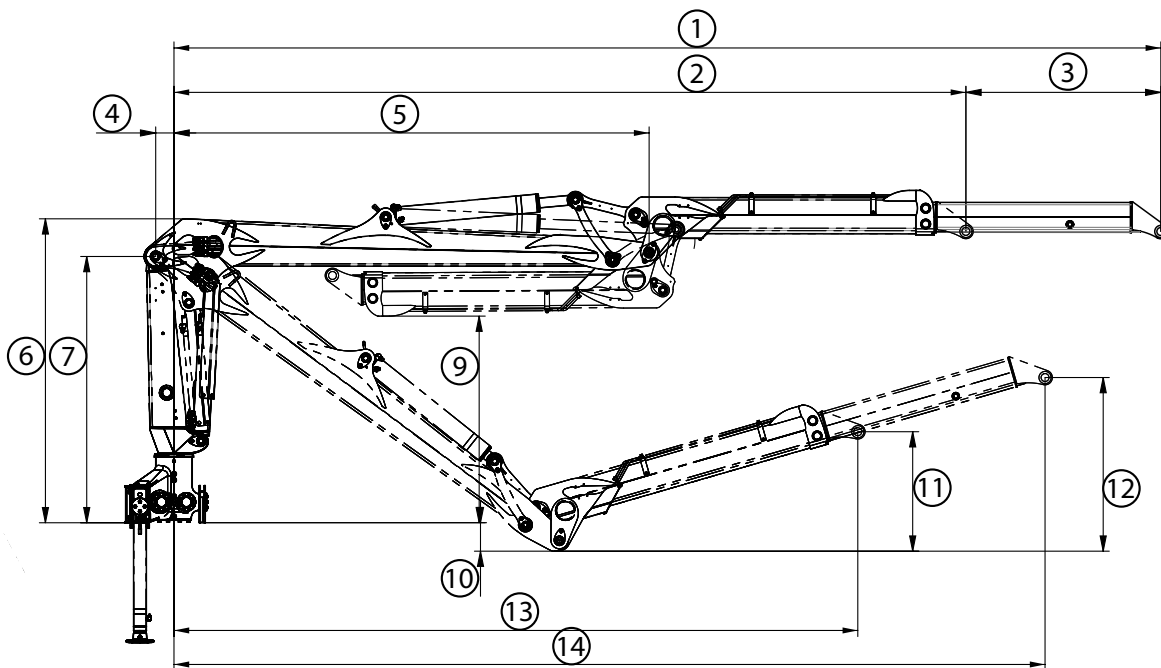


	↓ 3 m	↓ 4 m	↓ 5 m	↓ 6 m	↓ 7 m	↓ 8 m	↓ 9 m	↓ 10 m	
2212S-81	4 080	3 090	2 530	2 120	1 790	1 540	-	-	(kg)
2212S-86	3 910	2 960	2 430	2 030	1 720	1 480	-	-	(kg)
2212ST-97	3 910	2 930	2 490	2 070	1 690	1 480	1 310	-	(kg)
2212ST-102	3 850	2 950	2 370	1 970	1 650	1 430	1 260	1 120	(kg)

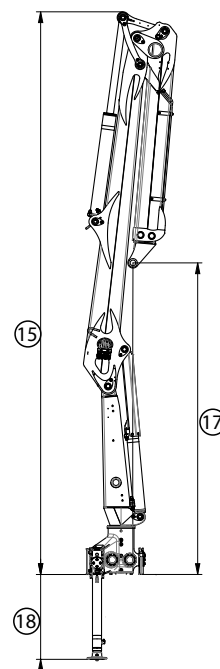
NOSTURIMITAT · CRANE DIMENSIONS

81

86

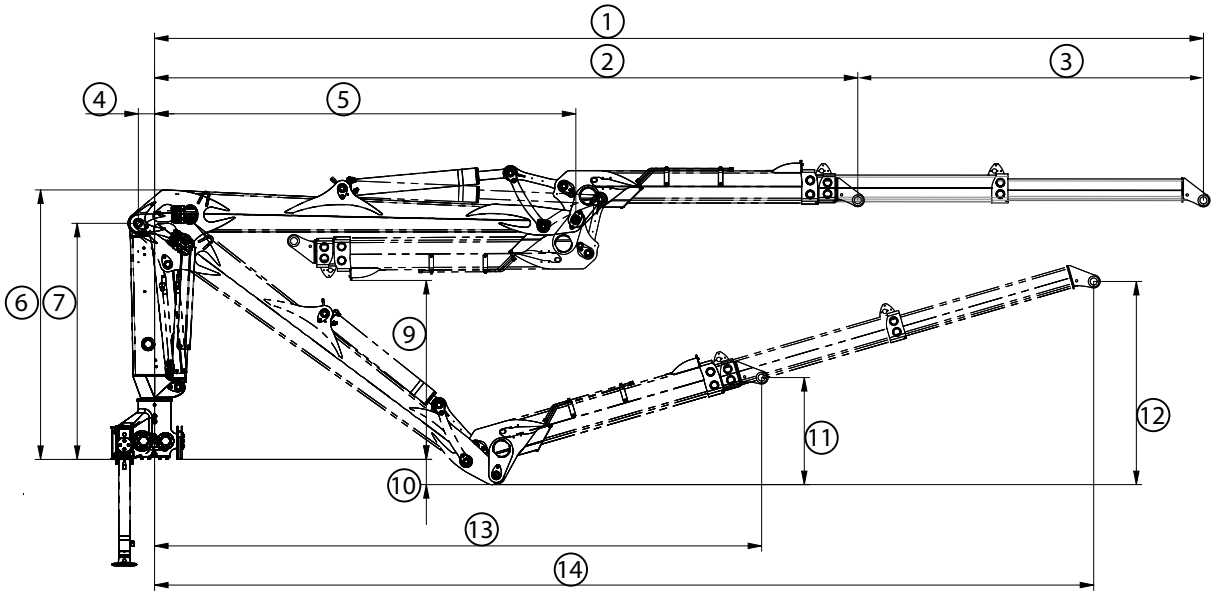


	2212S-81	2212S-81 HIGH	2212S-86	2212S-86 HIGH
1.	8105	8101	8605	8601
2.	6505	6501	7005	7001
3.	1600	1600	1600	1600
4.	150	154	150	154
5.	3900	3896	4400	4396
6.	2493	2693	2493	2694
7.	2184	2362	2184	2384
8.	-	-	-	-
9.	1685	1887	1691	1893
10.	525	525	525	559
11.	989	825	989	810
12.	1434	1169	1118	1144
13.	5616	5507	6028	5898
14.	7152	7069	7567	7463
15.	6528	6728	7026	7227
16.	-	-	-	-
17.	3609	3809	4107	4308
18.	802-1986	802-1986	802-1986	802-1986



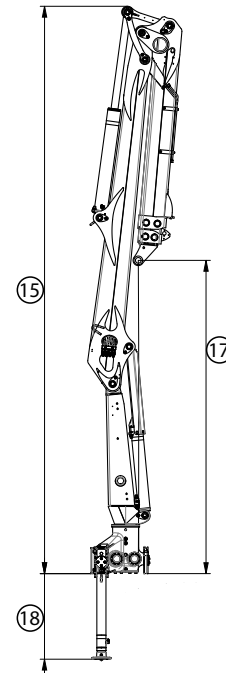
97

102

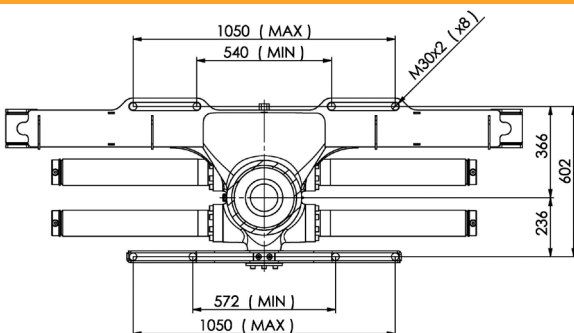


CRANE CODE 9000487

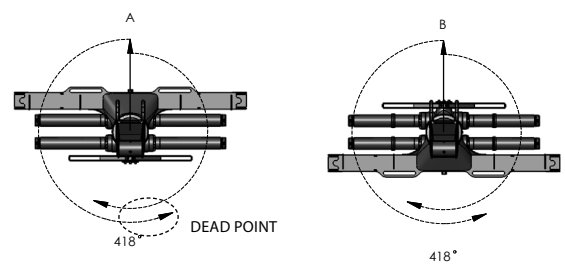
	2212ST-97	2212ST-97 HIGH	2212ST-102	2212ST-102 HIGH
1.	9 715	9 711	10 215	10 211
2.	6 515	6 511	7 015	7 011
3.	2 x 1 600	2 x 1 600	2 x 1 600	2 x 1 600
4.	150	154	150	154
5.	3 900	3 896	4 400	4 396
6.	2 493	2 693	2 493	2 693
7.	2 184	2 384	2 184	2 352
8.	-	-	-	-
9.	1 657	1 857	1 663	1 863
10.	525	525	525	525
11.	995	831	980	815
12.	1 916	1 519	1 851	1 484
13.	5 624	5 516	6 036	5 907
14.	8 686	8 641	9 116	9 036
15.	6 528	6 728	7 026	7 227
16.	-	-	-	-
17.	3 599	3 799	4 097	4 297
18.	802 - 1 986	802 - 1 986	802 - 1 986	802 - 1 986



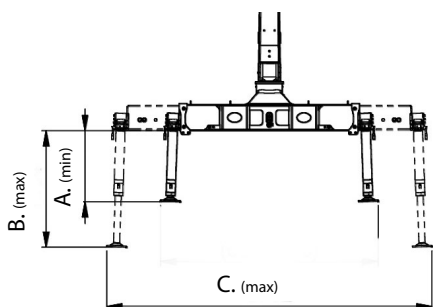
ASENNUSMITAT · MOUNTING DIMENSIONS



KÄÄNTÖVAIHTOEHDOT · SLEWING OPTIONS



TUKIJALAT • STABILIZERS



	2210S-81	2210S-86	2210ST-97	2210ST-102
A.	802	802	802	802
B.	1 986	1 986	1 986	1 986
c.	3 778	3 778	3 778	3 778

CRANE CODE 90000487

		2212S-81	2212S-81 HIGH	2212S-86	2212S-86 HIGH	2212ST-97	2212ST-97 HIGH	2212ST-102	2212ST-10 HIGH
Nostomomentti (netto) • Lifting capacity (net)	(kNm)	128	128	123	123	123	123	119	119
Max. ulottuvuus • Max. outreach	(mm)	8 100	8 100	8 600	8 600	9 700	9 700	10 200	10 200
Jatkeen isku • Stroke of the extensio	(mm)	1 600	1 600	1 600	1 600	2 x 1 600	2 x 1 600	2 x 1 600	2 x 1 600
Kääntömomentti • Slewing torque	(kNm)	23	23	23	23	23	23	23	23
Kääntökulma • Slewing angle	(°)	418	418	418	418	418	418	418	418
Suosittelava hydr. tuotto • Recommended oil flow									
▶ 1-piiri • 1-circuit	(l/min)	70 - 100	70 - 100	70 - 100	70 - 100	70 - 100	70 - 100	70 - 100	70 - 100
▶ 2-piiri • double circuit	(l/min)	2 x 80 - 90	2 x 80 - 90	2 x 80 - 90	2 x 80 - 90	2 x 80 - 90	2 x 80 - 90	2 x 80 - 90	2 x 80 - 90
▶ LS	(l/min)	180 - 200	180 - 200	180 - 200	180 - 200	180 - 200	180 - 200	180 - 200	180 - 200
Työpaine • Operating pressure	(MPa)	26	26	26	26	26	26	26	26
Paino sis. nosturin avohallintalaitteella ilman kahmaria, kääntäjää ja öljyä. Weight including the crane with top-seat, without the grapple, rotator and oil.	(kg)	2 147	2 168	2 176	2 197	2 245	2 266	2 274	2 295

Classification according: EN12999:2011 HC1/HD4/B4

Valmistajan antamat arvot ovat ohjeellisia. Kesla pidättää oikeuden muutoksiin.
The values provided by the manufacturer are indicative. Kesla reserves the right to make changes.



Kesla Oyj
Kuurnankatu 24
FI-80100 JOENSUU. FINLAND
Tel. +358 207 862 841
Fax +358 13 610 0521
www.kesla.com

