



2210S-81
2210S-86
2210ST-97
2210ST-102

CRANE CODE 9000487

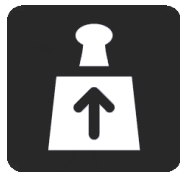
6/2024



TEKNISET TIEDOT

TECHNICAL DATA

NOSTOARVOT - LIFTING CAPACITY

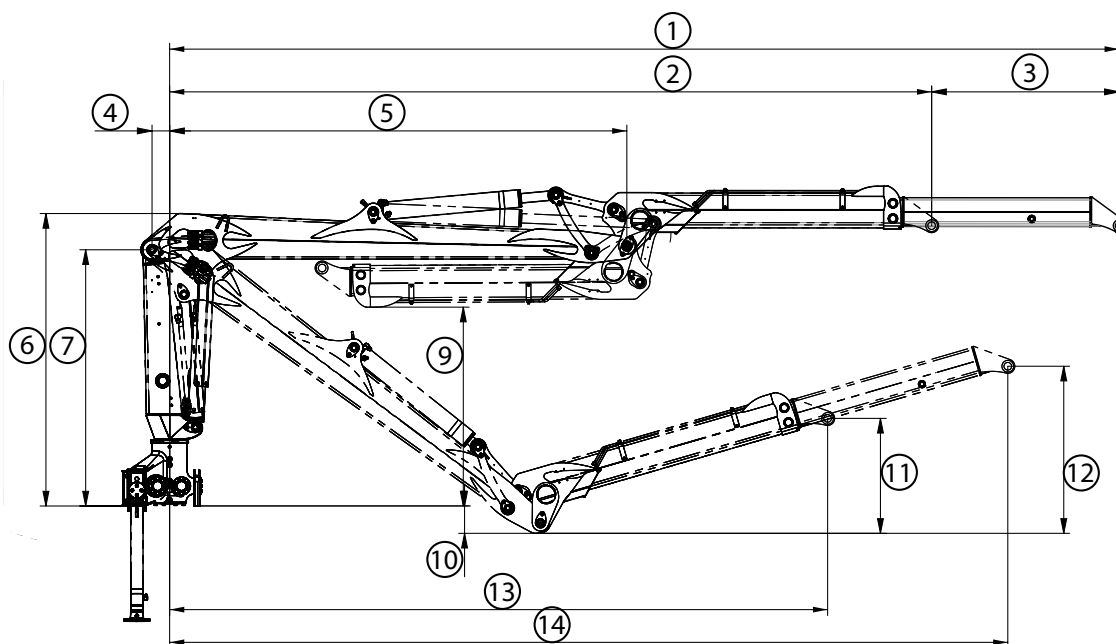


	3 m	4 m	5 m	6 m	7 m	8 m	9 m	10 m	
2210S-81	3 450	2 620	2 150	1 820	1 530	1 320	-	-	(kg)
2210S-86	3 350	2 550	2 080	1 750	1 470	1 260	-	-	(kg)
2210ST-97	3 300	2 480	2 030	1 690	1 410	1 240	1 100	-	(kg)
2210ST-102	3 050	2 380	1 920	1 600	1 340	1 120	1 000	890	(kg)

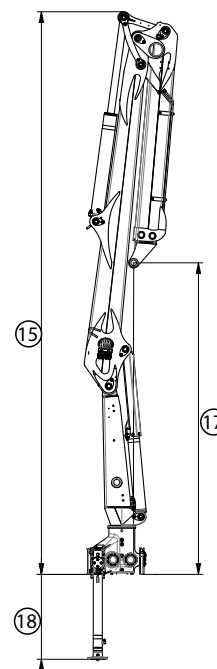
NOSTURIMITAT - CRANE DIMENSIONS

81

86

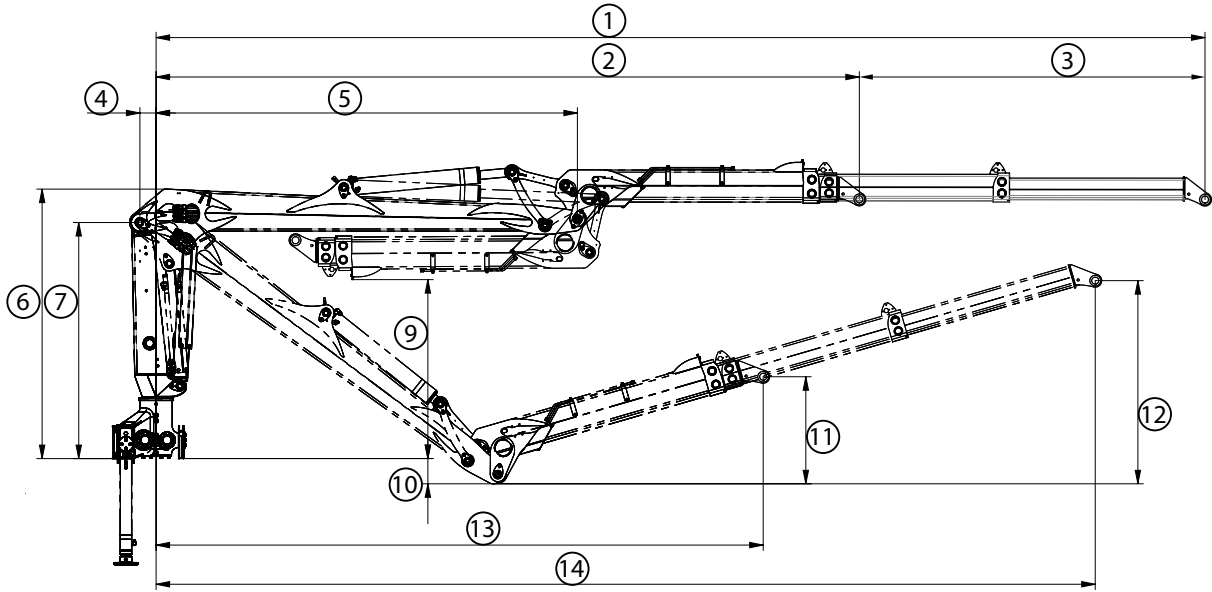


	2210S-81	2210S-81 HIGH	2210S-86	2210S-86 HIGH
1.	8 105	8 101	8 605	8 601
2.	6 505	6 501	7 005	7 001
3.	1 600	1 600	1 600	1 600
4.	150	154	150	154
5.	3 900	3 896	4 400	4 396
6.	2 493	2 693	2 493	2 694
7.	2 184	2 362	2 184	2 384
8.	-	-	-	-
9.	1 685	1 887	1 691	1 893
10.	525	525	525	559
11.	989	825	989	810
12.	1 434	1 169	1 118	1 144
13.	5 616	5 507	6 028	5 898
14.	7 152	7 069	7 567	7 463
15.	6 528	6 728	7 026	7 227
16.	-	-	-	-
17.	3 609	3 809	4 107	4 308
18.	802 - 1 986	802 - 1 986	802 - 1 986	802 - 1 986

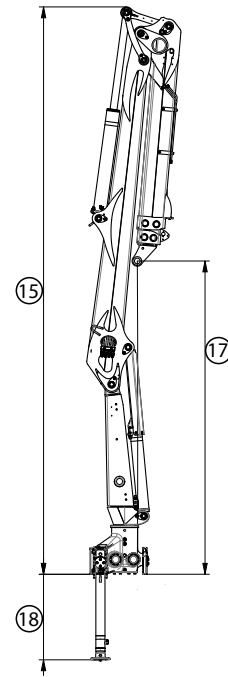


97

102

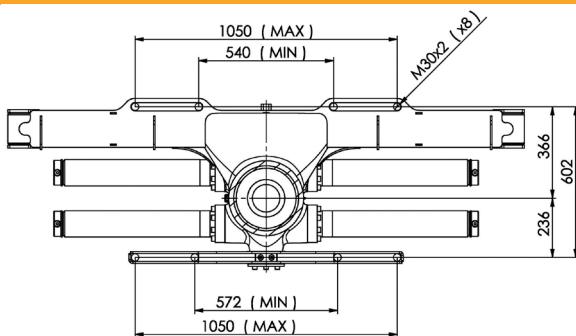


	2210ST-97	2210ST-97 HIGH	2210ST-97	2210ST-97 HIGH
1.	9 715	9 711	10 215	10 211
2.	6 515	6 511	7 015	7 011
3.	2 x 1 600	2 x 1 600	2 x 1 600	2 x 1 600
4.	150	154	150	154
5.	3 900	3 896	4 400	4 396
6.	2 493	2 693	2 493	2 693
7.	2 184	2 384	2 184	2 352
8.	-	-	-	-
9.	1 657	1 857	1 663	1 863
10.	525	525	525	525
11.	995	831	980	815
12.	1 916	1 519	1 851	1 484
13.	5 624	5 516	6 036	5 907
14.	8 686	8 641	9 116	9 036
15.	6 528	6 728	7 026	7 227
16.	-	-	-	-
17.	3 599	3 799	4 097	4 297
18.	802 - 1 986	802 - 1 986	802 - 1 986	802 - 1 986

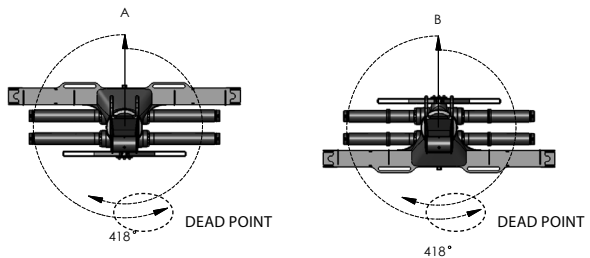


CRANE CODE 90000487

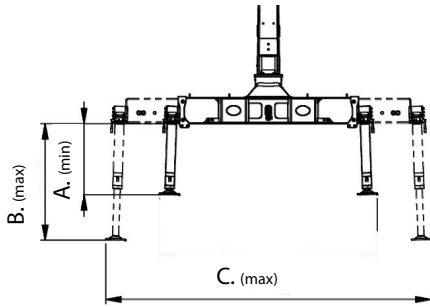
ASENNUSMITAT · MOUNTING DIMENSIONS



KÄÄNTÖVAIHTOEHDOT · SLEWING OPTIONS



TUKIJALAT • STABILIZERS



	2210S-81	2210S-86	2210ST-97	2210ST-102
A.	802	802	802	802
B.	1 986	1 986	1 986	1 986
C.	3 778	3 778	3 778	3 778

CRANE CODE 90000487

		2210S-81	2210S-81 HIGH	2210S-86	2210S-86 HIGH	2210ST-97	2210ST-97 HIGH	2210ST-102	2210ST-102 HIGH
Nostomomentti (netto) • Lifting capacity	(kNm)	105	105	101	101	101	101	97	97
Max. ulottuvuus • Max. outreach	(mm)	8 105	8 105	8 600	8 600	9 700	9 700	10 200	10 200
Jatkeen isku • Stroke of the extensio	(mm)	1 600	1 600	1 600	1 600	2 x 1 600	2 x 1 600	2 x 1 600	2 x 1 600
Kääntömomentti • Slewing torque	(kNm)	23	23	23	23	23	23	23	23
Kääntökulma • Slewing angle	(°)	418	418	418	418	418	418	418	418
Suosittelava hydr. tuotto • Recommended									
► 1-piiri • 1-circuit	(l)	70 - 100	70 - 100	70 - 100	70 - 100	70 - 100	70 - 100	70 - 100	70 - 100
► 2-piiri • double circuit	(l)	2 x 75 - 85	2 x 75 - 85	2 x 75 - 85	2 x 75 - 85	2 x 75 - 85	2 x 75 - 85	2 x 75 - 85	2 x 75 - 85
► LS	(l)	180 - 200	180 - 200	180 - 200	180 - 200	180 - 200	180 - 200	180 - 200	180 - 200
Työpaine • Operating pressure	(MPa)	26	26	26	26	26	26	26	26
Paino sis. nosturin avohallintalaitteella ilman kahmaria, kääntäjää ja öljyjä. Weight including the crane with top-seat, without the grapple, rotator and oil.	(kg)	2 120	2 141	2 163	2 184	2 178	2 199	2 242	2 263

Classification according: EN12999:2011 HC1/HD4/B4

Valmistajan antamat arvot ovat ohjeellisia. Kesla pidättää oikeuden muutoksiin.
The values provided by the manufacturer are indicative. Kesla reserves the right to make changes.



Kesla Oyj
Kuurnankatu 24
FI-80100 JOENSUU, FINLAND
Tel. +358 207 862 841
Fax +358 13 610 0521
www.kesla.com

