



2209S-81
2209S-86
2209ST-97

CRANE CODE 90000487

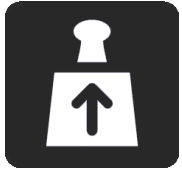
6/2024



TEKNISET TIEDOT

TECHNICAL DATA

NOSTOARVOT · LIFTING CAPACITY

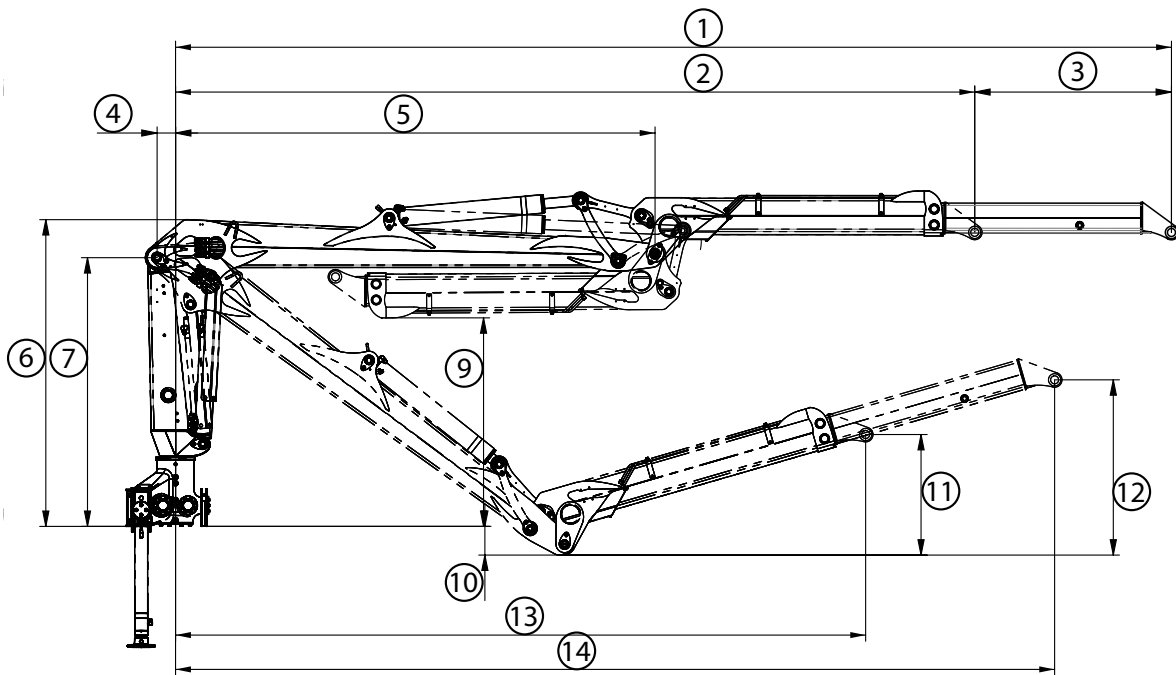


	3 m	4 m	5 m	6 m	7 m	8 m	9 m	
2209S-81	3 250	2 440	1 950	1 550	1 330	1 180	-	(kg)
2209S-86	3 110	2 340	1 870	1 490	1 270	1 130	-	(kg)
2209ST-97	3000	2 300	1 880	1 580	1 320	1 120	990	(kg)

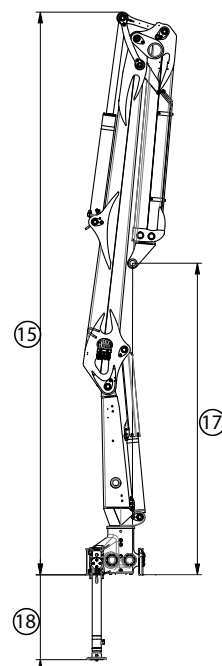
NOSTURIMITAT · CRANE DIMENSIONS

81

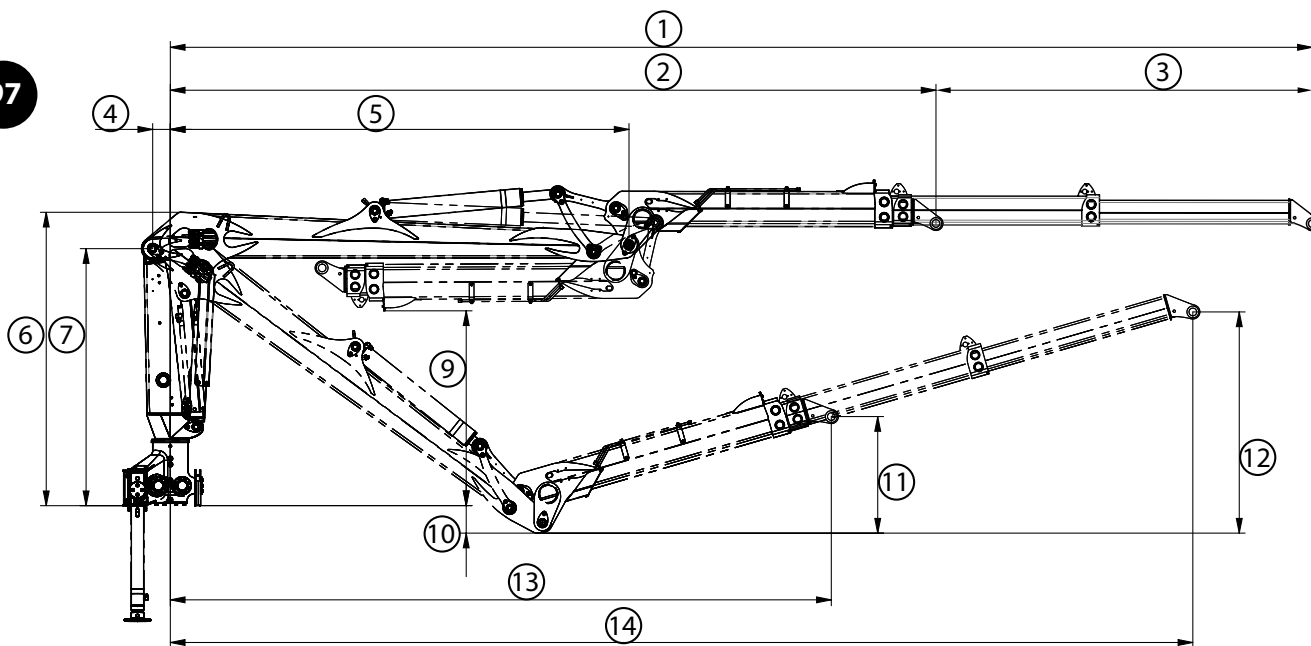
86



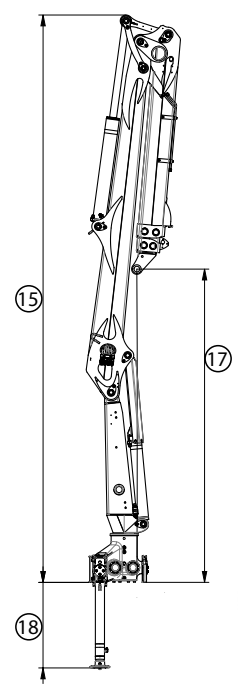
	2209S-81	2209S-81 HIGH	2209S-86	2209S-86 HIGH
1.	8 105	8 101	8 605	8 601
2.	6 505	6 501	7 005	7 001
3.	1 600	1 600	1 600	1 600
4.	150	154	150	154
5.	3 900	3 896	4 400	4 396
6.	2 493	2 693	2 493	2 694
7.	2 184	2 384	2 184	2 384
8.	-	-	-	-
9.	1 296	1 292	1 795	1 791
10.	1 685	1 887	1 691	1 893
11.	989	825	989	810
12.	1 434	1 169	1 118	1 144
13.	5 616	5 507	6 028	5 898
14.	7 152	7 069	7 567	7 463
15.	6 528	6 728	7 026	7 227
16.	-	-	-	-
17.	3 609	3 809	4 107	4 308
18.	802 - 1 986	802 - 1 986	802 - 1 986	802 - 1 986



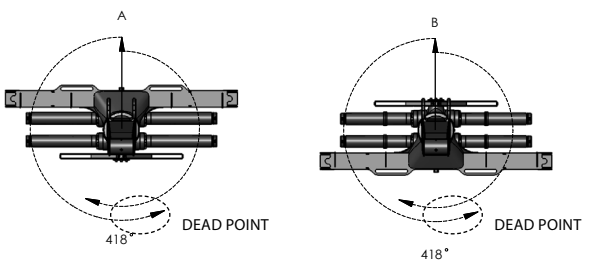
97



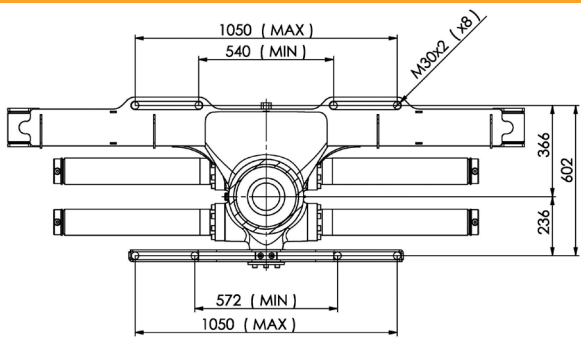
	2209ST-97	2209ST-97 HIGH
1.	9 715	9 711
2.	6 515	6 511
3.	2 x 1 600	2 x 1 600
4.	150	154
5.	3 900	3 896
6.	2 493	2 693
7.	2 184	2 384
8.	-	-
9.	1 657	1 857
10.	525	525
11.	995	831
12.	1 916	1 519
13.	5 624	5 516
14.	8 686	8 641
15.	6 528	6 728
16.	-	-
17.	3 599	3 799
18.	802 - 1 986	802 - 1 986



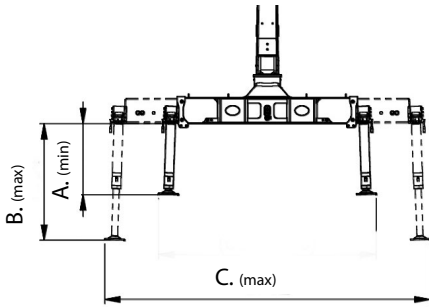
KÄÄNTÖVAIHTOEHDOT · SLEWING OPTIONS



ASENNUSMITAT · MOUNTING DIMENSIONS



TUKIJALAT • STABILIZERS



	22095-81	22095-86	22095T-97
A.	802	802	802
B.	1 986	1 986	1 986
C.	3 778	3 778	3 778

		22095-81	22095-81 HIGH	22095-86	22095-86 HIGH	22095T-97	22095T-97 HIGH
Nostomomentti (netto) • Lifting capacity (net)	(kNm)	95	95	91	91	91	91
Max. ulottuvuus • Max. outreach	(mm)	8 105	8 101	8 605	8 601	9 715	9 700
Jatkeen isku • Stroke of the extensio	(mm)	1 600	1 600	1 600	1 600	2 x 1 600	2 x 1 600
Kääntömomentti • Slewing torque	(kNm)	23	23	23	23	23	23
Kääntökulma • Slewing angle	(°)	418	418	418	418	418	418
Suosittelava hydr. tuotto • Recommended oil flow							
▶ 1-piiri • 1-circuit	(l/min)	70 - 100	71 - 100	70 - 100	71 - 100	70 - 100	71 - 100
▶ 2-piiri • double circuit	(l/min)	2 x 70 - 80	2 x 70 - 80	2 x 70 - 80	2 x 70 - 80	2 x 70 - 80	2 x 70 - 80
▶ LS	(l/min)	180 - 200	180 - 200	180 - 200	180 - 200	180 - 200	180 - 200
Työpaine • Operating pressure	(MPa)	26	26	26	26	26	26
Paino sis. nosturin avohallintalaitteella ilman kahmaria, kääntäjää ja öljyä. Weight including the crane with top-seat, without the grapple, rotator and oil.	(kg)	2 120	2 141	2 163	2 184	2 178	2 199

Classification according: EN12999:2011 HC1/HD4/B4

Valmistajan antamat arvot ovat ohjeellisia. Kesla pidättää oikeuden muutoksiin.
The values provided by the manufacturer are indicative. Kesla reserves the right to make changes.



Kesla Oyj
Kuurnankatu 24
FI-80100 JOENSUU. FINLAND
Tel. +358 207 862 841
Fax +358 13 610 0521
www.kesla.com

